

# Atlas Wire™

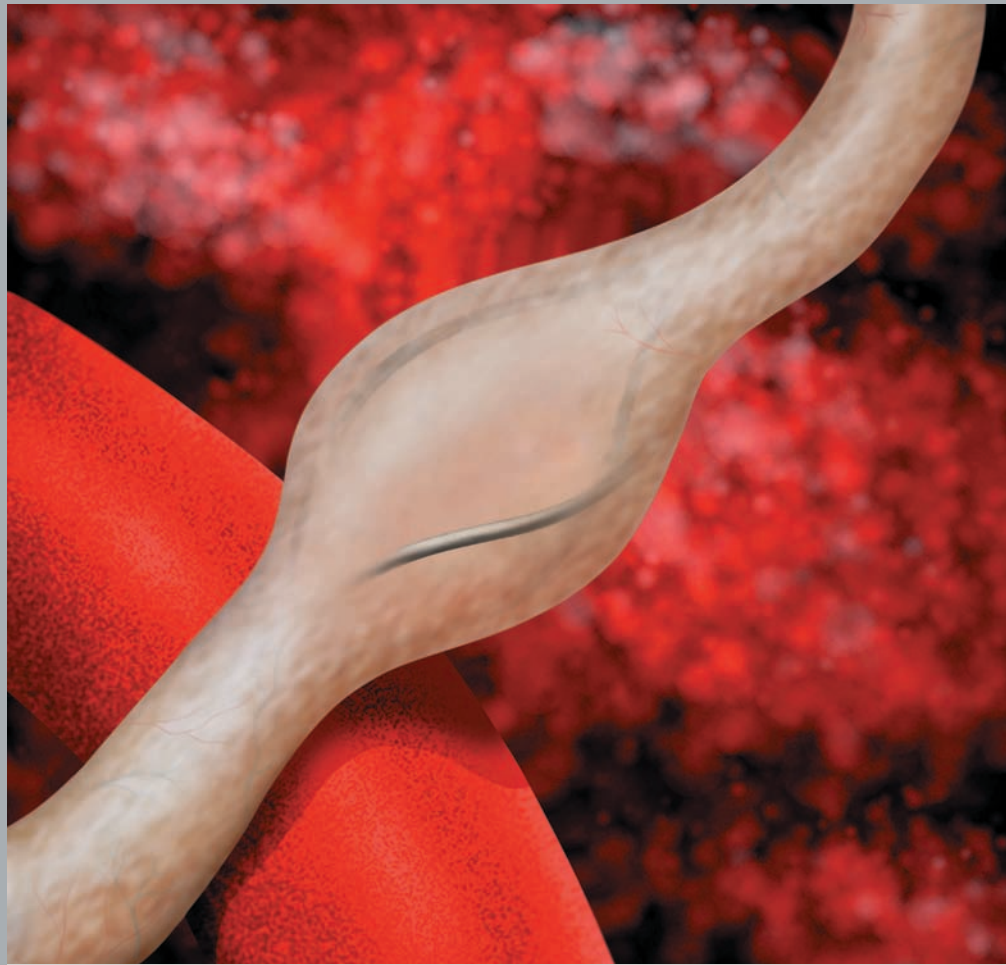
Our premiere stone extractor, the Atlas Wire™ Stone Extractors, has the proprietary wire and sheath technology that produce 10-30% more radial dilating strength than a paired wire design. Greater radial dilating strength eases stone entrapment by providing more space within the basket to capture a stone.

The Atlas Wire's flat-wire basket permits the stone to slide into the basket with ease. Atlas Wire™ Stone Extractors feature a 4-wire construction for maximum stone retention in a flat-wire design.

## Captura®

Our premiere stone extractor, the Captura® Helical Stone Extractors, has the proprietary wire and sheath technology that produce 10-30% more radial dilating strength than a paired wire design. Greater radial dilating strength eases stone entrapment by providing more space within the basket to capture a stone.

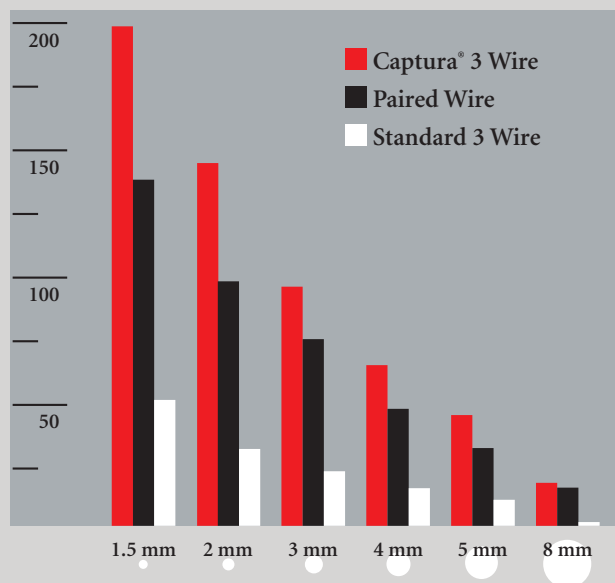
Captura's helical design wraps around and effectively captures the stone. The helical design facilitates the retention of the stone in the basket as it is manipulated down the ureter. The Captura® is available in 3, 4, and 5-wire configurations.



### Captura vs Paired Wire

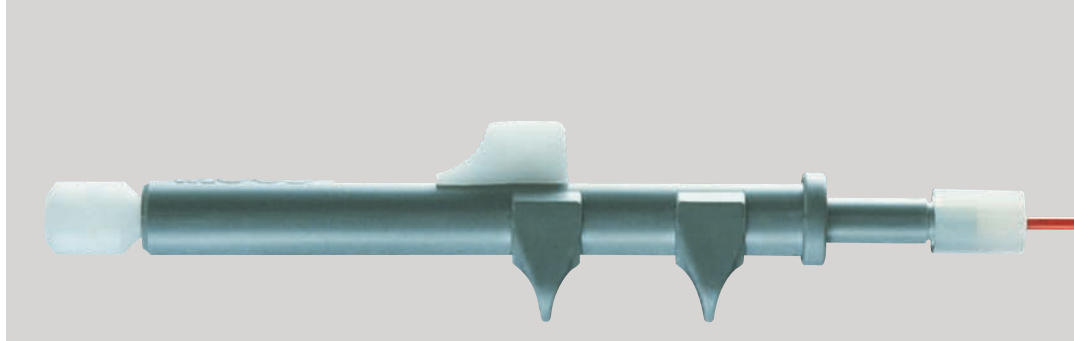
Compare Captura® to the competition. Our proprietary wire and sheath technology produces 10-30% greater radial dilating strength than a paired wire design.

Radial Force (in grams) of 3.0 French stone extractors



# COOK®

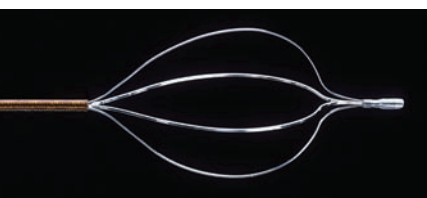
All Captura® and Atlas Wire™ Stone Extractors feature Unidex handles.



The Unidex handle is used for easy, one-handed operation of stone extractors. Unidex is light weight and can be removed to provide catheter or basket removal.

Unidex permits the basket itself to remain immobile. It is the sheath that is pulled back to reveal the basket. This enhances placement and decreases the likelihood that the stone will become dislodged while closing the basket.

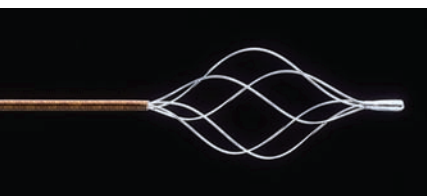
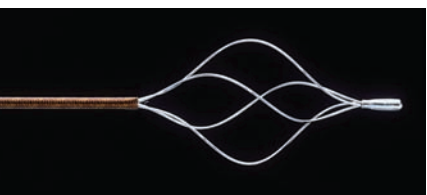
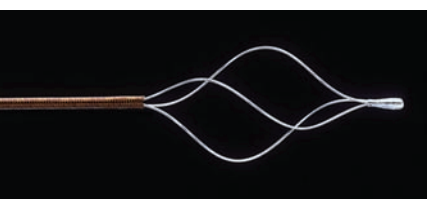
## Atlas Wire™



### Atlas Wire™ Stone Extractors

Order Number	Sheath Tip French Size	Sheath French Size	Catheter Length	Basket
114730-UDH-90-2.8	2.8	2.5	90 cm	4 wire
114730-UDH-90-3.2	3.2	3.0	90 cm	4 wire

## Captura®



### Captura® Helical Stone Extractors

Order Number	Sheath Tip French Size	Sheath French Size	Catheter Length	Basket
113130-UDH-90-2.8	2.8	2.5	90 cm	3 wire
114130-UDH-90-3.2	3.2	3.0	90 cm	4 wire
115130-UDH-90-3.2	3.2	3.0	90 cm	5 wire

**Cook Ireland Ltd.,**  
O'Halloran Road,  
National Technological Park,  
Limerick, Ireland  
Tel: +353 61 334440  
Fax: +353 61 334441  
[www.cookurological.com](http://www.cookurological.com)